



# Performance Aggressive Growth

## Portfolio Snapshot

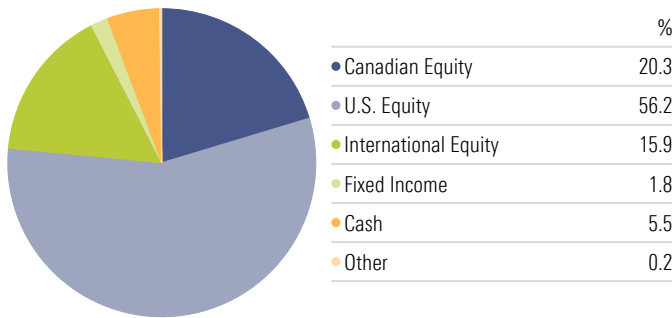
Avg. Fund MER  
1.02%

Portfolio Yield  
1.47%

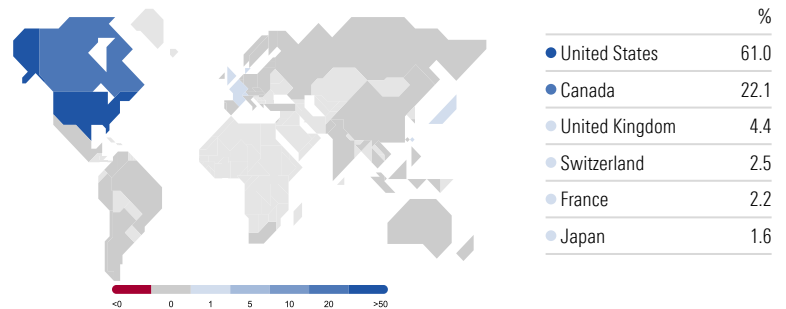
Inception Date  
4/10/2017

Benchmark  
Benchmark - Aggressive Growth

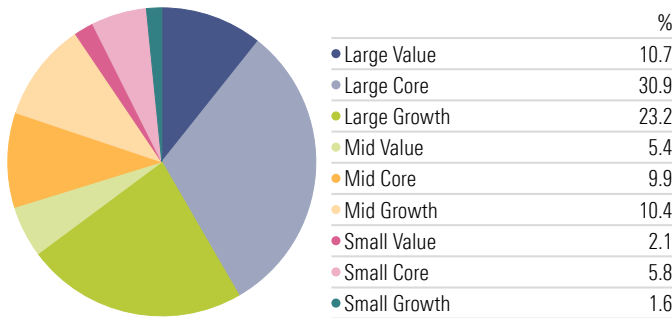
### Asset Allocation



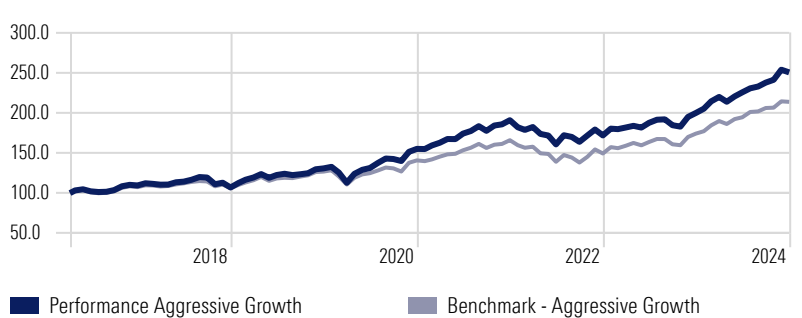
### Equity Country Exposure



### Equity Investment Style



### Performance



### Equity Sector Allocation

| Cyclical               | 37.7%        | Americas         | 83.5%       |
|------------------------|--------------|------------------|-------------|
| Basic Materials        | 3.1%         | Canada           | 22.1%       |
| Consumer Cyclical      | 11.6%        | United States    | 61.0%       |
| Financial Services     | 18.4%        | Greater Europe   | 12.5%       |
| Real Estate            | 4.6%         | Denmark          | 1.0%        |
| <b>Sensitive</b>       | <b>46.5%</b> | France           | 2.2%        |
| Communication Services | 5.9%         | Germany          | 0.7%        |
| Energy                 | 5.7%         | Netherlands      | 0.7%        |
| Industrials            | 13.0%        | Switzerland      | 2.5%        |
| Technology             | 21.9%        | United Kingdom   | 4.4%        |
| <b>Defensive</b>       | <b>15.8%</b> | Greater Asia     | <b>4.0%</b> |
| Consumer Defensive     | 5.4%         | Australia        | 0.5%        |
| Healthcare             | 8.8%         | Japan            | 1.6%        |
| Utilities              | 1.7%         | Emerging Markets | 1.4%        |

### Equity Geographic Allocation

### Trailing Returns

|           | Portfolio | Benchmark |      | Portfolio | Benchmark |
|-----------|-----------|-----------|------|-----------|-----------|
| 1 Month   | -1.3%     | -0.3%     | YTD  | 25.3%     | 22.7%     |
| 3 Months  | 5.3%      | 3.7%      | 2024 | 25.3%     | 22.7%     |
| 6 Months  | 11.0%     | 9.9%      | 2023 | 16.3%     | 16.6%     |
| 1 Year    | 25.3%     | 22.7%     | 2022 | -9.9%     | -10.0%    |
| 3 Years   | 9.5%      | 8.8%      | 2021 | 23.0%     | 17.9%     |
| 5 Years   | 13.9%     | 11.0%     | 2020 | 18.6%     | 11.0%     |
| 10 Years  | —         | 10.5%     | 2019 | 22.2%     | 19.5%     |
| Inception | 12.2%     | 9.9%      | 2018 | -2.3%     | -1.3%     |
|           |           |           | 2017 | —         | 12.7%     |
|           |           |           | 2016 | —         | 6.0%      |

### Calendar Year Returns

### Fixed Income Allocation

| Fixed Income Allocation |       | Fixed Income Statistics |      |
|-------------------------|-------|-------------------------|------|
| Government              | 9.7%  | Average Eff Duration    | 2.3  |
| Municipal               | 0.0%  | Average Maturity        | 2.6  |
| Corporate               | 25.2% | Average Coupon          | 4.0% |
| Securitized             | 0.2%  | Average Credit Quality  | BB   |
| Cash & Equivalents      | 64.9% |                         |      |

### Portfolio Risk & Return Statistics

|         | Std Dev | Upside Capture | Downside Capture | Max Drawdown |
|---------|---------|----------------|------------------|--------------|
| 1 Year  | 7.6%    | 117.5%         | 181.5%           | -2.7%        |
| 3 Years | 11.7%   | 103.6%         | 101.0%           | -15.8%       |
| 5 Years | 12.7%   | 110.9%         | 99.0%            | -15.8%       |

©2024 Morningstar. All Rights Reserved. Unless otherwise provided in a separate agreement, you may use this report only in the country in which its original distributor is based. The information, data, analyses and opinions contained herein (1) include the confidential and proprietary information of Morningstar, (2) may include, or be derived from, account information provided by your financial professional which cannot be verified by Morningstar, (3) may not be copied or redistributed, (4) do not constitute investment advice offered by Morningstar, (5) are provided solely for informational purposes and therefore are not an offer to buy or sell a security, and (6) are not warranted to be correct, complete or accurate. Except as otherwise required by law, Morningstar shall not be responsible for any trading decisions, damages or other losses resulting from, or related to, this information, data, analyses or opinions or their use. Opinions expressed are as of the date written and are subject to change without notice. Investment research is produced and issued by subsidiaries of Morningstar, Inc. including, but not limited to, Morningstar Research Services LLC, registered with and governed by the U.S. Securities and Exchange Commission. This report is supplemental sales literature. If applicable it must be preceded or accompanied by a prospectus, or equivalent, and disclosure statement. Please see important disclosures at the end of this report.



# Performance Aggressive Growth

## Portfolio Snapshot

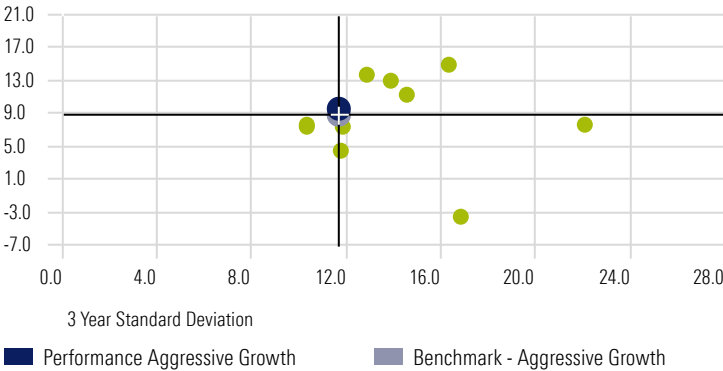
Avg. Fund MER  
1.02%

Portfolio Yield  
1.47%

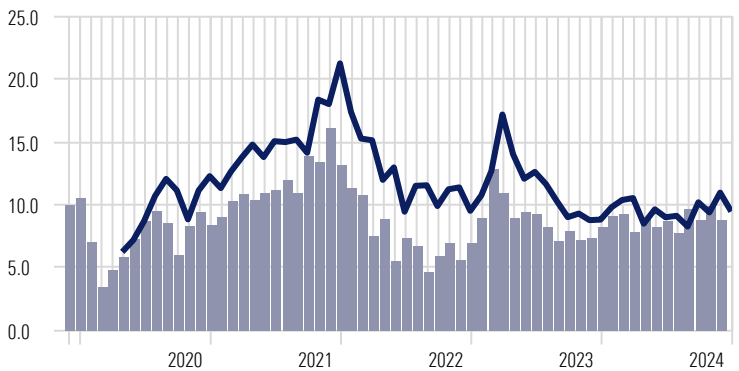
Inception Date  
4/10/2017

Benchmark  
Benchmark - Aggressive Growth

### 3 Year Risk-Reward



### 3 Year Rolling Returns



### Fundamental Analysis

| Equity                     | Portfolio  | Benchmark  | Fixed Income          | Portfolio | Benchmark |
|----------------------------|------------|------------|-----------------------|-----------|-----------|
| <b>Size</b>                |            |            | <b>Geography</b>      |           |           |
| Avg. Mkt Cap (mil)         | \$ 123,037 | \$ 202,030 | Canada                | 39.1%     | 97.8%     |
| <b>Valuation Multiples</b> |            |            | United States         | 9.0%      | 1.0%      |
| Price/Book                 | 3.7        | 3.4        | <b>Credit Quality</b> |           |           |
| Price/Cash Flow            | 15.6       | 15.6       | AAA                   | 3.1%      | 41.0%     |
| Price/Earnings             | 24.7       | 23.4       | AA                    | 14.5%     | 33.1%     |
| Price/Sales                | 2.6        | 2.5        | A                     | 15.9%     | 14.9%     |
| <b>Financial Ratios</b>    |            |            | BBB                   | 40.2%     | 10.8%     |
| Net Margin                 | 18.5%      | 18.9%      | BB                    | 18.9%     | 0.0%      |
| Return on Assets           | 11.3%      | 12.9%      | B                     | 6.1%      | 0.0%      |
| Return on Equity           | 26.5%      | 28.8%      | Below B               | 0.2%      | 0.0%      |
| ROIC                       | 19.9%      | 22.8%      | Not Rated             | 1.0%      | 0.2%      |

### 3 Year Risk & Return

|                    | Portfolio | Benchmark |
|--------------------|-----------|-----------|
| Standard Deviation | 11.7%     | 11.7%     |
| Loss Std Dev       | 6.3%      | 6.8%      |
| Sharpe Ratio       | 0.07      | 0.03      |
| Sortino Ratio      | 0.09      | 0.04      |
| Best Month         | 7.1%      | 6.4%      |
| Worst Month        | -6.4%     | -6.6%     |
| Max Drawdown       | -15.8%    | -16.8%    |

### 5 Year Risk & Return

|                    | Portfolio | Benchmark |
|--------------------|-----------|-----------|
| Standard Deviation | 12.7%     | 12.0%     |
| Loss Std Dev       | 8.6%      | 7.9%      |
| Sharpe Ratio       | 0.51      | 0.37      |
| Sortino Ratio      | 0.75      | 0.54      |
| Best Month         | 9.8%      | 8.6%      |
| Worst Month        | -10.1%    | -8.3%     |
| Max Drawdown       | -15.8%    | -16.8%    |

### Portfolio Holdings

| Name                                    | Weight | Risk Rating    | Morningstar Category                          | Mgmt Fee | MER   | Fund Yield |
|---|--------|----------------|---|----------|-------|------------|
| TD US Index F                           | 15.5%  | Medium         | Canada Fund US Equity                         | 0.15%    | 0.17% | 0.70%      |
| AGF Global Select Series F              | 13.0%  | Medium         | Canada Fund Global Equity                     | 0.80%    | 1.15% | 0.00%      |
| NCM Global Income Growth Class Series F | 12.3%  | Low to Medium  | Canada Fund Global Equity Balanced            | 1.00%    | 1.42% | 3.40%      |
| NCM Income Growth Class Series F        | 12.2%  | Medium         | Canada Fund Canadian Equity Balanced          | 1.00%    | 1.50% | 3.64%      |
| Canoe Defensive International Eq F      | 11.5%  | Low to Medium  | Canada Fund International Equity              | 0.75%    | 1.16% | 0.18%      |
| TD US Disciplined Equity Alpha - F      | 10.4%  | Medium         | Canada Fund US Equity                         | 0.80%    | 0.88% | 0.24%      |
| Dynamic Canadian Dividend Series F      | 8.7%   | Low to Medium  | Canada Fund Canadian Dividend & Income Equity | 0.85%    | 1.14% | 3.82%      |
| AGF American Growth Class Series F      | 7.7%   | Medium         | Canada Fund US Equity                         | 1.00%    | 1.20% | 0.00%      |
| TD NASDAQ Index - F                     | 5.0%   | Medium to High | Canada Fund US Equity                         | 0.50%    | 0.55% | 0.42%      |
| Dynamic Global Real Estate Series F     | 2.3%   | Medium         | Canada Fund Real Estate Equity                | 1.00%    | 1.22% | 3.23%      |

©2024 Morningstar. All Rights Reserved. Unless otherwise provided in a separate agreement, you may use this report only in the country in which its original distributor is based. The information, data, analyses and opinions contained herein (1) include the confidential and proprietary information of Morningstar, (2) may include, or be derived from, account information provided by your financial professional which cannot be verified by Morningstar, (3) may not be copied or redistributed, (4) do not constitute investment advice offered by Morningstar, (5) are provided solely for informational purposes and therefore are not an offer to buy or sell a security, and (6) are not warranted to be correct, complete or accurate. Except as otherwise required by law, Morningstar shall not be responsible for any trading decisions, damages or other losses resulting from, or related to, this information, data, analyses or opinions or their use. Opinions expressed are as of the date written and are subject to change without notice. Investment research is produced and issued by subsidiaries of Morningstar, Inc. including, but not limited to, Morningstar Research Services LLC, registered with and governed by the U.S. Securities and Exchange Commission. This report is supplemental sales literature. If applicable it must be preceded or accompanied by a prospectus, or equivalent, and disclosure statement. Please see important disclosures at the end of this report.



# Performance Aggressive Growth

## Portfolio MPT Statistics

|          | Std Dev | Alpha | Beta | R2    | Information Ratio | Tracking Error | Positive Months | Neegative Months |
|----------|---------|-------|------|-------|-------------------|----------------|-----------------|------------------|
| 1 Year   | 7.6%    | 1.82  | 1.05 | 90.87 | 0.81              | 3.15           | 10              | 2                |
| 3 Years  | 11.7%   | 0.64  | 0.98 | 96.87 | 0.24              | 2.78           | 22              | 14               |
| 5 Years  | 12.7%   | 2.48  | 1.03 | 97.32 | 0.98              | 2.93           | 39              | 21               |
| 10 Years | —       | —     | —    | —     | —                 | —              | —               | —                |

## Portfolio Composition

|   | Weight | YTD   | 1 Year | 3 Years | 5 Years | 10 Years | Since Inception | Inception Date |
|---|--------|-------|--------|---------|---------|----------|-----------------|----------------|
| Performance Aggressive Growth           |        | 25.3% | 25.3%  | 9.5%    | 13.9%   | —        | 12.2%           | 4/10/2017      |
| AGF American Growth Class Series F      | 7.7%   | 42.1% | 42.1%  | 15.0%   | 21.9%   | 17.1%    | 6.9%            | 1/20/2000      |
| AGF Global Select Series F              | 13.0%  | 38.7% | 38.7%  | 11.3%   | 18.1%   | 17.4%    | 6.6%            | 4/27/2000      |
| Canoe Defensive International Eq F      | 11.5%  | 12.6% | 12.6%  | 4.4%    | 8.3%    | —        | 10.6%           | 1/3/2017       |
| Dynamic Canadian Dividend Series F      | 8.7%   | 13.7% | 13.7%  | 7.3%    | 11.3%   | 9.8%     | 8.1%            | 4/5/2002       |
| Dynamic Global Real Estate Series F     | 2.3%   | 5.0%  | 5.0%   | -3.7%   | 2.9%    | 5.3%     | 5.6%            | 1/12/2007      |
| NCM Global Income Growth Class Series F | 12.3%  | 20.1% | 20.1%  | 7.4%    | 9.4%    | 9.2%     | 9.6%            | 5/31/2011      |
| NCM Income Growth Class Series F        | 12.2%  | 18.5% | 18.5%  | 7.7%    | 10.8%   | 8.1%     | 9.1%            | 12/30/2005     |
| TD NASDAQ Index - F                     | 5.0%   | 23.9% | 23.9%  | 7.6%    | 17.8%   | 16.6%    | 7.4%            | 11/1/2000      |
| TD US Disciplined Equity Alpha - F      | 10.4%  | 31.1% | 31.1%  | 13.7%   | 16.7%   | —        | 15.5%           | 9/13/2016      |
| TD US Index F                           | 15.5%  | 35.6% | 35.6%  | 12.9%   | 16.5%   | 14.7%    | 7.1%            | 11/1/2000      |

## Benchmark Composition

|                               | Weight | YTD   | 1 Year | 3 Years | 5 Years | 10 Years | Since Inception | Inception Date |
|-------------------------------|--------|-------|--------|---------|---------|----------|-----------------|----------------|
| Benchmark - Aggressive Growth |        | 22.7  | 22.7   | 8.8     | 11.0    | 10.5     | 12.1            | 12/31/2011     |
| FTSE Canada ST Bond           | 2.5%   | 5.7%  | 5.7%   | 2.1%    | 2.1%    | 1.9%     | 6.7%            | 12/31/1979     |
| FTSE Canada Universe Bond     | 10.0%  | 4.2%  | 4.2%   | -0.6%   | 0.8%    | 2.0%     | 6.5%            | 12/31/1985     |
| Morningstar DM xNA NR CAD     | 30.0%  | 12.9% | 12.9%  | 5.4%    | 6.5%    | 7.5%     | 4.9%            | 5/1/2015       |
| S&P 500 TR CAD                | 42.5%  | 36.4% | 36.4%  | 13.8%   | 16.9%   | 15.4%    | 9.1%            | 1/31/2002      |
| S&P/TSX Composite TR          | 15.0%  | 21.7% | 21.7%  | 8.6%    | 11.1%   | 8.9%     | 9.1%            | 1/3/1977       |

## Benchmark Disclosure

### FTSE Canada Short Term Bond

The index measures the performance of a broadly diversified range of investment grade federal, provincial, municipal and corporate bonds with a term to maturity between one and five years. It is a market capitalization weighted index.

### FTSE Canada Universe Bond

The index measures the performance of investment-grade Government of Canada, provincial, corporate and municipal bonds issued domestically in Canada and denominated in Canadian dollars.

### Morningstar Developed Markets xNA NR CAD

The Morningstar Developed Markets ex-North America Index measures the performance of large-, mid- and small-cap stocks in developed markets around the world outside of North America, representing the top 97% of the investable universe by market capitalization.

### S&P 500 TR CAD

The index measures the performance of 500 widely held stocks in US equity market. Standard and Poor's chooses member companies for the index based on market size, liquidity and industry group representation. It is market capitalization-weighted.

### S&P/TSX Composite TR

The S&P/TSX Composite covers approximately 95% of the Canadian equities market, and has been the primary gauge for Canadian-based, Toronto Stock Exchange-listed companies since 1977.

### Holdings Proxy

Benchmark constituent composition is calculated using the following proxies: iShares MSCI World Index ETF, iShares Core Canadian Universe Bond Index ETF.

©2024 Morningstar. All Rights Reserved. Unless otherwise provided in a separate agreement, you may use this report only in the country in which its original distributor is based. The information, data, analyses and opinions contained herein (1) include the confidential and proprietary information of Morningstar, (2) may include, or be derived from, account information provided by your financial professional which cannot be verified by Morningstar, (3) may not be copied or redistributed, (4) do not constitute investment advice offered by Morningstar, (5) are provided solely for informational purposes and therefore are not an offer to buy or sell a security, and (6) are not warranted to be correct, complete or accurate. Except as otherwise required by law, Morningstar shall not be responsible for any trading decisions, damages or other losses resulting from, or related to, this information, data, analyses or opinions or their use. Opinions expressed are as of the date written and are subject to change without notice. Investment research is produced and issued by subsidiaries of Morningstar, Inc. including, but not limited to, Morningstar Research Services LLC, registered with and governed by the U.S. Securities and Exchange Commission. This report is supplemental sales literature. If applicable it must be preceded or accompanied by a prospectus, or equivalent, and disclosure statement. Please see important disclosures at the end of this report.

# Performance Aggressive Growth



## Consolidated Holdings

Calculation Benchmark: iShares MSCI World ETF Portfolio Date: 12/31/2024 Top 10 holdings: 17.46% Other: 82.54%

|   | Portfolio Weight | Ticker      | Country    | Sector                   | Portfolio Date | Benchmark Weight |
|---|------------------|-------------|------------|--------------------------|----------------|------------------|
| <b>NVIDIA Corp</b>                      | <b>3.82%</b>     | <b>NVDA</b> | <b>USA</b> | <b>Technology</b>        | <b>—</b>       | <b>4.70%</b>     |
| AGF Global Select Series F              | 1.05%            | —           | —          | —                        | 11/30/2024     | —                |
| TD US Disciplined Equity Alpha - F      | 0.72%            | —           | —          | —                        | 6/30/2024      | —                |
| AGF American Growth Class Series F      | 0.66%            | —           | —          | —                        | 11/30/2024     | —                |
| TD US Index F                           | 0.63%            | —           | —          | —                        | 6/30/2024      | —                |
| TD NASDAQ Index - F                     | 0.40%            | —           | —          | —                        | 6/30/2024      | —                |
| TD U.S. Equity Index ETF                | 0.36%            | TPU         | CAN        | —                        | 12/31/2024     | —                |
| SPDR® S&P 500® ETF Trust                | 0.00%            | SPY         | USA        | —                        | 12/31/2024     | —                |
| <b>Amazon.com Inc</b>                   | <b>2.52%</b>     | <b>AMZN</b> | <b>USA</b> | <b>Consumer Cyclical</b> | <b>—</b>       | <b>2.96%</b>     |
| AGF Global Select Series F              | 0.87%            | —           | —          | —                        | 11/30/2024     | —                |
| AGF American Growth Class Series F      | 0.51%            | —           | —          | —                        | 11/30/2024     | —                |
| TD US Index F                           | 0.37%            | —           | —          | —                        | 6/30/2024      | —                |
| TD US Disciplined Equity Alpha - F      | 0.27%            | —           | —          | —                        | 6/30/2024      | —                |
| TD NASDAQ Index - F                     | 0.26%            | —           | —          | —                        | 6/30/2024      | —                |
| TD U.S. Equity Index ETF                | 0.24%            | TPU         | CAN        | —                        | 12/31/2024     | —                |
| SPDR® S&P 500® ETF Trust                | 0.00%            | SPY         | USA        | —                        | 12/31/2024     | —                |
| <b>Apple Inc</b>                        | <b>2.40%</b>     | <b>AAPL</b> | <b>USA</b> | <b>Technology</b>        | <b>—</b>       | <b>5.43%</b>     |
| TD US Disciplined Equity Alpha - F      | 0.91%            | —           | —          | —                        | 6/30/2024      | —                |
| TD US Index F                           | 0.65%            | —           | —          | —                        | 6/30/2024      | —                |
| TD U.S. Equity Index ETF                | 0.43%            | TPU         | CAN        | —                        | 12/31/2024     | —                |
| TD NASDAQ Index - F                     | 0.42%            | —           | —          | —                        | 6/30/2024      | —                |
| SPDR® S&P 500® ETF Trust                | 0.00%            | SPY         | USA        | —                        | 12/31/2024     | —                |
| <b>Microsoft Corp</b>                   | <b>2.33%</b>     | <b>MSFT</b> | <b>USA</b> | <b>Technology</b>        | <b>—</b>       | <b>4.25%</b>     |
| TD US Index F                           | 0.69%            | —           | —          | —                        | 6/30/2024      | —                |
| TD US Disciplined Equity Alpha - F      | 0.49%            | —           | —          | —                        | 6/30/2024      | —                |
| TD NASDAQ Index - F                     | 0.43%            | —           | —          | —                        | 6/30/2024      | —                |
| TD U.S. Equity Index ETF                | 0.35%            | TPU         | CAN        | —                        | 12/31/2024     | —                |
| NCM Global Income Growth Class Series F | 0.27%            | —           | —          | —                        | 11/30/2024     | —                |
| Dynamic Canadian Dividend Series F      | 0.08%            | —           | —          | —                        | 9/30/2024      | —                |
| SPDR® S&P 500® ETF Trust                | 0.00%            | SPY         | USA        | —                        | 12/31/2024     | —                |
| <b>Eli Lilly and Co</b>                 | <b>1.28%</b>     | <b>LLY</b>  | <b>USA</b> | <b>Healthcare</b>        | <b>—</b>       | <b>0.89%</b>     |
| AGF Global Select Series F              | 0.46%            | —           | —          | —                        | 11/30/2024     | —                |
| AGF American Growth Class Series F      | 0.33%            | —           | —          | —                        | 11/30/2024     | —                |
| NCM Global Income Growth Class Series F | 0.25%            | —           | —          | —                        | 11/30/2024     | —                |
| TD US Index F                           | 0.16%            | —           | —          | —                        | 6/30/2024      | —                |
| TD U.S. Equity Index ETF                | 0.08%            | TPU         | CAN        | —                        | 12/31/2024     | —                |
| SPDR® S&P 500® ETF Trust                | 0.00%            | SPY         | USA        | —                        | 12/31/2024     | —                |

# Performance Aggressive Growth



## Consolidated Holdings

Calculation Benchmark: iShares MSCI World ETF Portfolio Date: 12/31/2024 Top 10 holdings: 17.46% Other: 82.54%

|  | Portfolio Weight | Ticker       | Country    | Sector                        | Portfolio Date | Benchmark Weight |
|--|------------------|--------------|------------|-------------------------------|----------------|------------------|
| <b>Alphabet Inc Class A</b>                          | <b>1.07%</b>     | <b>GOOGL</b> | <b>USA</b> | <b>Communication Services</b> | <b>—</b>       | <b>1.58%</b>     |
| TD US Disciplined Equity Alpha - F                   | 0.37%            | —            | —          | —                             | 6/30/2024      | —                |
| TD US Index F  | 0.23%            | —            | —          | —                             | 6/30/2024      | —                |
| NCM Global Income Growth Class Series F              | 0.20%            | —            | —          | —                             | 11/30/2024     | —                |
| TD NASDAQ Index - F                                  | 0.14%            | —            | —          | —                             | 6/30/2024      | —                |
| TD U.S. Equity Index ETF                             | 0.13%            | TPU          | CAN        | —                             | 12/31/2024     | —                |
| SPDR® S&P 500® ETF Trust                             | 0.00%            | SPY          | USA        | —                             | 12/31/2024     | —                |
| <b>London Stock Exchange Group PLC</b>               | <b>1.06%</b>     | <b>LSEG</b>  | <b>GBR</b> | <b>Financial Services</b>     | <b>—</b>       | <b>0.10%</b>     |
| Canoe Defensive International Eq F                   | 0.68%            | —            | —          | —                             | 11/30/2024     | —                |
| NCM Global Income Growth Class Series F              | 0.38%            | —            | —          | —                             | 11/30/2024     | —                |
| <b>Intuitive Surgical Inc</b>                        | <b>1.05%</b>     | <b>ISRG</b>  | <b>USA</b> | <b>Healthcare</b>             | <b>—</b>       | <b>0.26%</b>     |
| AGF Global Select Series F                           | 0.61%            | —            | —          | —                             | 11/30/2024     | —                |
| AGF American Growth Class Series F                   | 0.33%            | —            | —          | —                             | 11/30/2024     | —                |
| TD NASDAQ Index - F                                  | 0.05%            | —            | —          | —                             | 6/30/2024      | —                |
| TD US Index F  | 0.03%            | —            | —          | —                             | 6/30/2024      | —                |
| TD U.S. Equity Index ETF                             | 0.02%            | TPU          | CAN        | —                             | 12/31/2024     | —                |
| SPDR® S&P 500® ETF Trust                             | 0.00%            | SPY          | USA        | —                             | 12/31/2024     | —                |
| <b>Taiwan Semiconductor Manufacturing Co Ltd ADR</b> | <b>0.98%</b>     | <b>TSM</b>   | <b>TWN</b> | <b>Technology</b>             | <b>—</b>       | <b>—</b>         |
| Canoe Defensive International Eq F                   | 0.98%            | —            | —          | —                             | 11/30/2024     | —                |
| <b>Boston Scientific Corp</b>                        | <b>0.97%</b>     | <b>BSX</b>   | <b>USA</b> | <b>Healthcare</b>             | <b>—</b>       | <b>0.19%</b>     |
| AGF Global Select Series F                           | 0.60%            | —            | —          | —                             | 11/30/2024     | —                |
| AGF American Growth Class Series F                   | 0.33%            | —            | —          | —                             | 11/30/2024     | —                |
| TD US Index F  | 0.02%            | —            | —          | —                             | 6/30/2024      | —                |
| TD U.S. Equity Index ETF                             | 0.02%            | TPU          | CAN        | —                             | 12/31/2024     | —                |
| SPDR® S&P 500® ETF Trust                             | 0.00%            | SPY          | USA        | —                             | 12/31/2024     | —                |