



Providence Aggressive Growth

Portfolio Snapshot

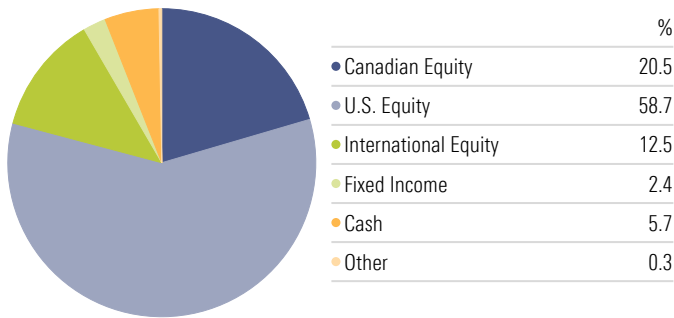
Avg. Fund MER
1.01%

Portfolio Yield
1.64%

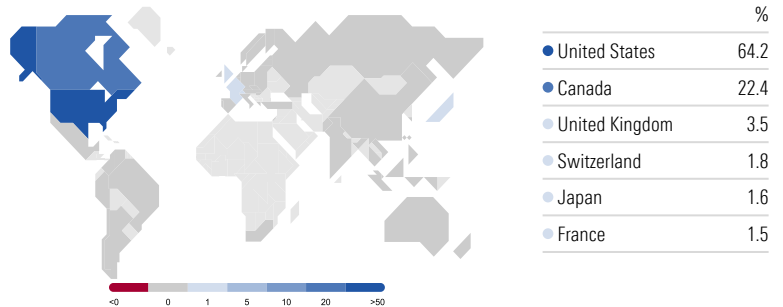
Inception Date
4/10/2017

Benchmark
Benchmark - Aggressive Growth

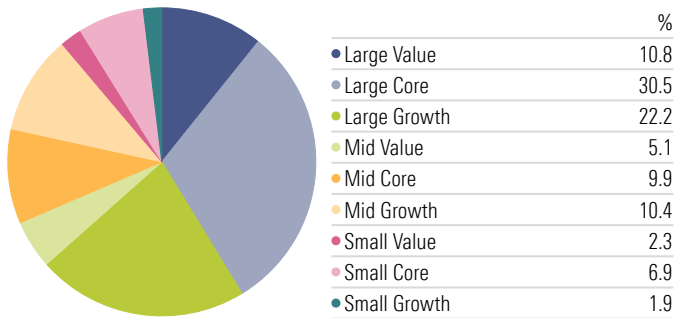
Asset Allocation



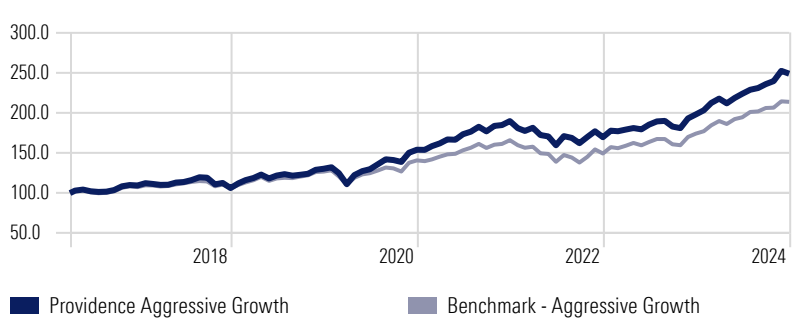
Equity Country Exposure



Equity Investment Style



Performance



Equity Sector Allocation

Cyclical	37.4%	Americas	87.2%
Basic Materials	2.9%	Canada	22.4%
Consumer Cyclical	11.2%	United States	64.2%
Financial Services	17.9%	Greater Europe	9.4%
Real Estate	5.4%	Denmark	0.8%
Sensitive	47.1%	France	1.5%
Communication Services	6.3%	Germany	0.5%
Energy	6.0%	Netherlands	0.5%
Industrials	12.9%	Switzerland	1.8%
Technology	21.9%	United Kingdom	3.5%
Defensive	15.5%	Greater Asia	3.4%
Consumer Defensive	5.0%	Australia	0.4%
Healthcare	8.9%	Japan	1.6%
Utilities	1.6%	Emerging Markets	1.4%

Equity Geographic Allocation

Trailing Returns

	Portfolio	Benchmark		Portfolio	Benchmark
1 Month	-1.4%	-0.3%	YTD	25.6%	22.7%
3 Months	5.5%	3.7%	2024	25.6%	22.7%
6 Months	11.2%	9.9%	2023	16.8%	16.6%
1 Year	25.6%	22.7%	2022	-10.6%	-10.0%
3 Years	9.5%	8.8%	2021	23.2%	17.9%
5 Years	13.8%	11.0%	2020	18.2%	11.0%
10 Years	—	10.5%	2019	22.6%	19.5%
Inception	12.2%	9.9%	2018	-2.9%	-1.3%
			2017	—	12.7%
			2016	—	6.0%

Calendar Year Returns

Fixed Income Allocation

Fixed Income Allocation		Fixed Income Statistics	
Government	10.8%	Average Eff Duration	2.3
Municipal	0.0%	Average Maturity	2.6
Corporate	28.8%	Average Coupon	4.0%
Securitized	0.3%	Average Credit Quality	BB
Cash & Equivalents	60.1%		

Portfolio Risk & Return Statistics

	Std Dev	Upside Capture	Downside Capture	Max Drawdown
1 Year	7.7%	118.7%	183.0%	-2.7%
3 Years	11.8%	104.2%	102.1%	-15.9%
5 Years	13.1%	112.3%	101.9%	-16.0%

©2024 Morningstar. All Rights Reserved. Unless otherwise provided in a separate agreement, you may use this report only in the country in which its original distributor is based. The information, data, analyses and opinions contained herein (1) include the confidential and proprietary information of Morningstar, (2) may include, or be derived from, account information provided by your financial professional which cannot be verified by Morningstar, (3) may not be copied or redistributed, (4) do not constitute investment advice offered by Morningstar, (5) are provided solely for informational purposes and therefore are not an offer to buy or sell a security, and (6) are not warranted to be correct, complete or accurate. Except as otherwise required by law, Morningstar shall not be responsible for any trading decisions, damages or other losses resulting from, or related to, this information, data, analyses or opinions or their use. Opinions expressed are as of the date written and are subject to change without notice. Investment research is produced and issued by subsidiaries of Morningstar, Inc. including, but not limited to, Morningstar Research Services LLC, registered with and governed by the U.S. Securities and Exchange Commission. This report is supplemental sales literature. If applicable it must be preceded or accompanied by a prospectus, or equivalent, and disclosure statement. Please see important disclosures at the end of this report.



Providence Aggressive Growth

Portfolio Snapshot

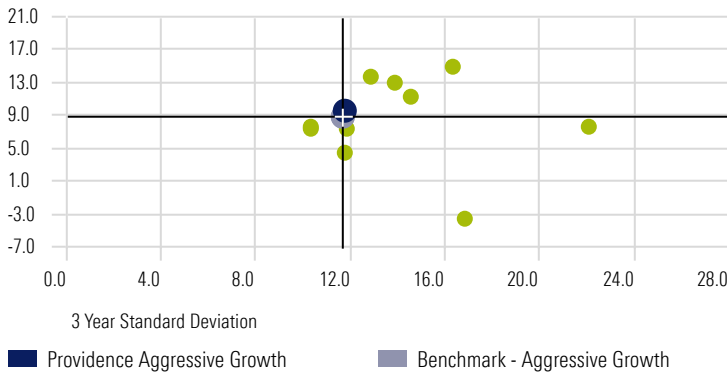
Avg. Fund MER
1.01%

Portfolio Yield
1.64%

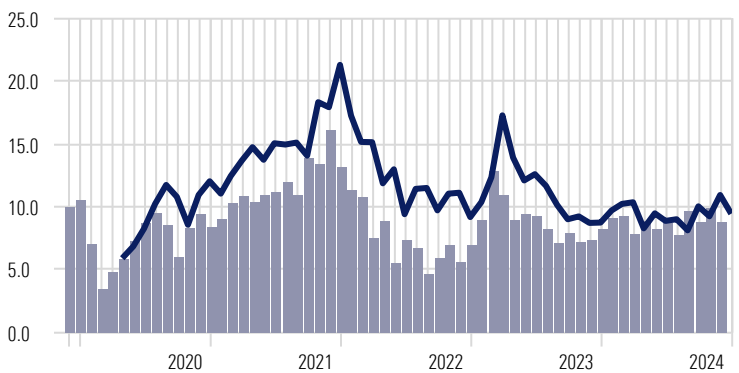
Inception Date
4/10/2017

Benchmark
Benchmark - Aggressive Growth

3 Year Risk-Reward



3 Year Rolling Returns



Fundamental Analysis

Equity	Portfolio	Benchmark	Fixed Income	Portfolio	Benchmark
Size			Geography		
Avg. Mkt Cap (mil)	\$ 120,638	\$ 202,030	Canada	43.9%	97.8%
Valuation Multiples			United States	10.7%	1.0%
Price/Book	3.7	3.4	Credit Quality		
Price/Cash Flow	15.5	15.6	AAA	3.3%	41.0%
Price/Earnings	24.9	23.4	AA	14.5%	33.1%
Price/Sales	2.6	2.5	A	15.8%	14.9%
Financial Ratios			BBB	41.0%	10.8%
Net Margin	18.5%	18.9%	BB	18.5%	0.0%
Return on Assets	11.4%	12.9%	B	5.8%	0.0%
Return on Equity	26.7%	28.8%	Below B	0.2%	0.0%
ROIC	20.1%	22.8%	Not Rated	0.9%	0.2%

3 Year Risk & Return

	Portfolio	Benchmark
Standard Deviation	11.8%	11.7%
Loss Std Dev	6.5%	6.8%
Sharpe Ratio	0.07	0.03
Sortino Ratio	0.09	0.04
Best Month	7.1%	6.4%
Worst Month	-6.5%	-6.6%
Max Drawdown	-15.9%	-16.8%

5 Year Risk & Return

	Portfolio	Benchmark
Standard Deviation	13.1%	12.0%
Loss Std Dev	9.2%	7.9%
Sharpe Ratio	0.49	0.37
Sortino Ratio	0.73	0.54
Best Month	10.3%	8.6%
Worst Month	-11.1%	-8.3%
Max Drawdown	-16.0%	-16.8%

Portfolio Holdings

Name	Weight	Risk Rating	Morningstar Category	Mgmt Fee	MER	Fund Yield
TD US Index F	18.0%	Medium	Canada Fund US Equity	0.15%	0.17%	0.70%
NCM Global Income Growth Class Series F	17.2%	Low to Medium	Canada Fund Global Equity Balanced	1.00%	1.42%	3.40%
NCM Income Growth Class Series F	14.6%	Medium	Canada Fund Canadian Equity Balanced	1.00%	1.50%	3.64%
AGF Global Select Series F	12.9%	Medium	Canada Fund Global Equity	0.80%	1.15%	0.00%
TD US Disciplined Equity Alpha - F	7.8%	Medium	Canada Fund US Equity	0.80%	0.88%	0.24%
Canoe Defensive International Eq F	6.7%	Low to Medium	Canada Fund International Equity	0.75%	1.16%	0.18%
TD NASDAQ Index - F	6.5%	Medium to High	Canada Fund US Equity	0.50%	0.55%	0.42%
AGF American Growth Class Series F	6.2%	Medium	Canada Fund US Equity	1.00%	1.20%	0.00%
Dynamic Canadian Dividend Series F	5.8%	Low to Medium	Canada Fund Canadian Dividend & Income Equity	0.85%	1.14%	3.82%
Dynamic Global Real Estate Series F	2.7%	Medium	Canada Fund Real Estate Equity	1.00%	1.22%	3.23%

©2024 Morningstar. All Rights Reserved. Unless otherwise provided in a separate agreement, you may use this report only in the country in which its original distributor is based. The information, data, analyses and opinions contained herein (1) include the confidential and proprietary information of Morningstar, (2) may include, or be derived from, account information provided by your financial professional which cannot be verified by Morningstar, (3) may not be copied or redistributed, (4) do not constitute investment advice offered by Morningstar, (5) are provided solely for informational purposes and therefore are not an offer to buy or sell a security, and (6) are not warranted to be correct, complete or accurate. Except as otherwise required by law, Morningstar shall not be responsible for any trading decisions, damages or other losses resulting from, or related to, this information, data, analyses or opinions or their use. Opinions expressed are as of the date written and are subject to change without notice. Investment research is produced and issued by subsidiaries of Morningstar, Inc. including, but not limited to, Morningstar Research Services LLC, registered with and governed by the U.S. Securities and Exchange Commission. This report is supplemental sales literature. If applicable it must be preceded or accompanied by a prospectus, or equivalent, and disclosure statement. Please see important disclosures at the end of this report.



Providence Aggressive Growth

Portfolio MPT Statistics

	Std Dev	Alpha	Beta	R2	Information Ratio	Tracking Error	Positive Months	Neegative Months
1 Year	7.7%	2.09	1.05	90.14	0.88	3.27	10	2
3 Years	11.8%	0.62	0.99	96.56	0.22	2.93	22	14
5 Years	13.1%	2.34	1.05	96.86	0.85	3.31	39	21
10 Years	—	—	—	—	—	—	—	—

Portfolio Composition

	Weight	YTD	1 Year	3 Years	5 Years	10 Years	Since Inception	Inception Date
Providence Aggressive Growth		25.6%	25.6%	9.5%	13.8%	—	12.2%	4/10/2017
AGF American Growth Class Series F	6.2%	42.1%	42.1%	15.0%	21.9%	17.1%	6.9%	1/20/2000
AGF Global Select Series F	12.9%	38.7%	38.7%	11.3%	18.1%	17.4%	6.6%	4/27/2000
Canoe Defensive International Eq F	6.7%	12.6%	12.6%	4.4%	8.3%	—	10.6%	1/3/2017
Dynamic Canadian Dividend Series F	5.8%	13.7%	13.7%	7.3%	11.3%	9.8%	8.1%	4/5/2002
Dynamic Global Real Estate Series F	2.7%	5.0%	5.0%	-3.7%	2.9%	5.3%	5.6%	1/12/2007
NCM Global Income Growth Class Series F	17.2%	20.1%	20.1%	7.4%	9.4%	9.2%	9.6%	5/31/2011
NCM Income Growth Class Series F	14.6%	18.5%	18.5%	7.7%	10.8%	8.1%	9.1%	12/30/2005
TD NASDAQ Index - F	6.5%	23.9%	23.9%	7.6%	17.8%	16.6%	7.4%	11/1/2000
TD US Disciplined Equity Alpha - F	7.8%	31.1%	31.1%	13.7%	16.7%	—	15.5%	9/13/2016
TD US Index F	18.0%	35.6%	35.6%	12.9%	16.5%	14.7%	7.1%	11/1/2000

Benchmark Composition

	Weight	YTD	1 Year	3 Years	5 Years	10 Years	Since Inception	Inception Date
Benchmark - Aggressive Growth		22.7	22.7	8.8	11.0	10.5	12.1	12/31/2011
FTSE Canada ST Bond	2.5%	5.7%	5.7%	2.1%	2.1%	1.9%	6.7%	12/31/1979
FTSE Canada Universe Bond	10.0%	4.2%	4.2%	-0.6%	0.8%	2.0%	6.5%	12/31/1985
Morningstar DM xNA NR CAD	30.0%	12.9%	12.9%	5.4%	6.5%	7.5%	4.9%	5/1/2015
S&P 500 TR CAD	42.5%	36.4%	36.4%	13.8%	16.9%	15.4%	9.1%	1/31/2002
S&P/TSX Composite TR	15.0%	21.7%	21.7%	8.6%	11.1%	8.9%	9.1%	1/3/1977

Benchmark Disclosure

FTSE Canada Short Term Bond

The index measures the performance of a broadly diversified range of investment grade federal, provincial, municipal and corporate bonds with a term to maturity between one and five years. It is a market capitalization weighted index.

FTSE Canada Universe Bond

The index measures the performance of investment-grade Government of Canada, provincial, corporate and municipal bonds issued domestically in Canada and denominated in Canadian dollars.

Morningstar Developed Markets xNA NR CAD

The Morningstar Developed Markets ex-North America Index measures the performance of large-, mid- and small-cap stocks in developed markets around the world outside of North America, representing the top 97% of the investable universe by market capitalization.

S&P 500 TR CAD

The index measures the performance of 500 widely held stocks in US equity market. Standard and Poor's chooses member companies for the index based on market size, liquidity and industry group representation. It is market capitalization-weighted.

S&P/TSX Composite TR

The S&P/TSX Composite covers approximately 95% of the Canadian equities market, and has been the primary gauge for Canadian-based, Toronto Stock Exchange-listed companies since 1977.

Holdings Proxy

Benchmark constituent composition is calculated using the following proxies: iShares MSCI World Index ETF, iShares Core Canadian Universe Bond Index ETF.

©2024 Morningstar. All Rights Reserved. Unless otherwise provided in a separate agreement, you may use this report only in the country in which its original distributor is based. The information, data, analyses and opinions contained herein (1) include the confidential and proprietary information of Morningstar, (2) may include, or be derived from, account information provided by your financial professional which cannot be verified by Morningstar, (3) may not be copied or redistributed, (4) do not constitute investment advice offered by Morningstar, (5) are provided solely for informational purposes and therefore are not an offer to buy or sell a security, and (6) are not warranted to be correct, complete or accurate. Except as otherwise required by law, Morningstar shall not be responsible for any trading decisions, damages or other losses resulting from, or related to, this information, data, analyses or opinions or their use. Opinions expressed are as of the date written and are subject to change without notice. Investment research is produced and issued by subsidiaries of Morningstar, Inc. including, but not limited to, Morningstar Research Services LLC, registered with and governed by the U.S. Securities and Exchange Commission. This report is supplemental sales literature. If applicable it must be preceded or accompanied by a prospectus, or equivalent, and disclosure statement. Please see important disclosures at the end of this report.

Providence Aggressive Growth



Consolidated Holdings

Calculation Benchmark: iShares MSCI World ETF Portfolio Date: 12/31/2024 Top 10 holdings: 17.79% Other: 82.21%

	Portfolio Weight	Ticker	Country	Sector	Portfolio Date	Benchmark Weight
NVIDIA Corp	3.79%	NVDA	USA	Technology	—	4.70%
AGF Global Select Series F	1.05%	—	—	—	11/30/2024	—
TD US Index F	0.73%	—	—	—	6/30/2024	—
TD US Disciplined Equity Alpha - F	0.54%	—	—	—	6/30/2024	—
AGF American Growth Class Series F	0.53%	—	—	—	11/30/2024	—
TD NASDAQ Index - F	0.51%	—	—	—	6/30/2024	—
TD U.S. Equity Index ETF	0.42%	TPU	CAN	—	12/31/2024	—
SPDR® S&P 500® ETF Trust	0.00%	SPY	USA	—	12/31/2024	—
Microsoft Corp	2.59%	MSFT	USA	Technology	—	4.25%
TD US Index F	0.81%	—	—	—	6/30/2024	—
TD NASDAQ Index - F	0.56%	—	—	—	6/30/2024	—
TD U.S. Equity Index ETF	0.41%	TPU	CAN	—	12/31/2024	—
NCM Global Income Growth Class Series F	0.38%	—	—	—	11/30/2024	—
TD US Disciplined Equity Alpha - F	0.37%	—	—	—	6/30/2024	—
Dynamic Canadian Dividend Series F	0.05%	—	—	—	9/30/2024	—
SPDR® S&P 500® ETF Trust	0.00%	SPY	USA	—	12/31/2024	—
Amazon.com Inc	2.53%	AMZN	USA	Consumer Cyclical	—	2.96%
AGF Global Select Series F	0.87%	—	—	—	11/30/2024	—
TD US Index F	0.43%	—	—	—	6/30/2024	—
AGF American Growth Class Series F	0.40%	—	—	—	11/30/2024	—
TD NASDAQ Index - F	0.34%	—	—	—	6/30/2024	—
TD U.S. Equity Index ETF	0.27%	TPU	CAN	—	12/31/2024	—
TD US Disciplined Equity Alpha - F	0.20%	—	—	—	6/30/2024	—
SPDR® S&P 500® ETF Trust	0.00%	SPY	USA	—	12/31/2024	—
Apple Inc	2.48%	AAPL	USA	Technology	—	5.43%
TD US Index F	0.76%	—	—	—	6/30/2024	—
TD US Disciplined Equity Alpha - F	0.68%	—	—	—	6/30/2024	—
TD NASDAQ Index - F	0.55%	—	—	—	6/30/2024	—
TD U.S. Equity Index ETF	0.50%	TPU	CAN	—	12/31/2024	—
SPDR® S&P 500® ETF Trust	0.00%	SPY	USA	—	12/31/2024	—
Eli Lilly and Co	1.35%	LLY	USA	Healthcare	—	0.89%
AGF Global Select Series F	0.46%	—	—	—	11/30/2024	—
NCM Global Income Growth Class Series F	0.35%	—	—	—	11/30/2024	—
AGF American Growth Class Series F	0.27%	—	—	—	11/30/2024	—
TD US Index F	0.19%	—	—	—	6/30/2024	—
TD U.S. Equity Index ETF	0.09%	TPU	CAN	—	12/31/2024	—
SPDR® S&P 500® ETF Trust	0.00%	SPY	USA	—	12/31/2024	—

Providence Aggressive Growth



Consolidated Holdings

Calculation Benchmark: iShares MSCI World ETF Portfolio Date: 12/31/2024 Top 10 holdings: 17.79% Other: 82.21%

	Portfolio Weight	Ticker	Country	Sector	Portfolio Date	Benchmark Weight
Alphabet Inc Class A	1.16%	GOOGL	USA	Communication Services	—	1.58%
NCM Global Income Growth Class Series F	0.28%	—	—	—	11/30/2024	—
TD US Disciplined Equity Alpha - F	0.28%	—	—	—	6/30/2024	—
TD US Index F	0.26%	—	—	—	6/30/2024	—
TD NASDAQ Index - F	0.18%	—	—	—	6/30/2024	—
TD U.S. Equity Index ETF	0.15%	TPU	CAN	—	12/31/2024	—
SPDR® S&P 500® ETF Trust	0.00%	SPY	USA	—	12/31/2024	—
Meta Platforms Inc Class A	1.07%	META	USA	Communication Services	—	1.82%
TD NASDAQ Index - F	0.30%	—	—	—	6/30/2024	—
TD US Index F	0.27%	—	—	—	6/30/2024	—
TD U.S. Equity Index ETF	0.17%	TPU	CAN	—	12/31/2024	—
TD US Disciplined Equity Alpha - F	0.17%	—	—	—	6/30/2024	—
NCM Global Income Growth Class Series F	0.16%	—	—	—	11/30/2024	—
SPDR® S&P 500® ETF Trust	0.00%	SPY	USA	—	12/31/2024	—
Intuitive Surgical Inc	1.01%	ISRG	USA	Healthcare	—	0.26%
AGF Global Select Series F	0.61%	—	—	—	11/30/2024	—
AGF American Growth Class Series F	0.26%	—	—	—	11/30/2024	—
TD NASDAQ Index - F	0.07%	—	—	—	6/30/2024	—
TD US Index F	0.04%	—	—	—	6/30/2024	—
TD U.S. Equity Index ETF	0.02%	TPU	CAN	—	12/31/2024	—
SPDR® S&P 500® ETF Trust	0.00%	SPY	USA	—	12/31/2024	—
London Stock Exchange Group PLC	0.92%	LSEG	GBR	Financial Services	—	0.10%
NCM Global Income Growth Class Series F	0.53%	—	—	—	11/30/2024	—
Canoe Defensive International Eq F	0.40%	—	—	—	11/30/2024	—
Boston Scientific Corp	0.91%	BSX	USA	Healthcare	—	0.19%
AGF Global Select Series F	0.60%	—	—	—	11/30/2024	—
AGF American Growth Class Series F	0.26%	—	—	—	11/30/2024	—
TD US Index F	0.03%	—	—	—	6/30/2024	—
TD U.S. Equity Index ETF	0.02%	TPU	CAN	—	12/31/2024	—
SPDR® S&P 500® ETF Trust	0.00%	SPY	USA	—	12/31/2024	—